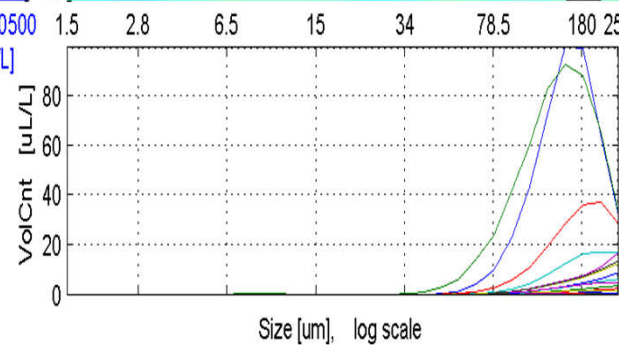
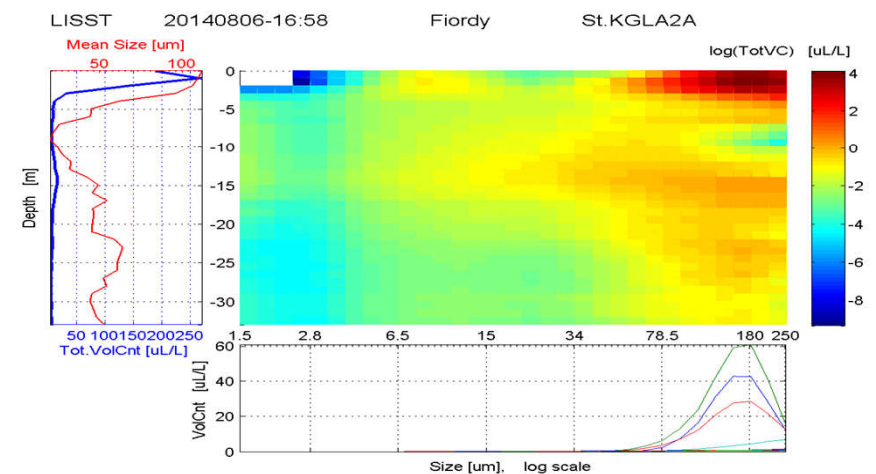
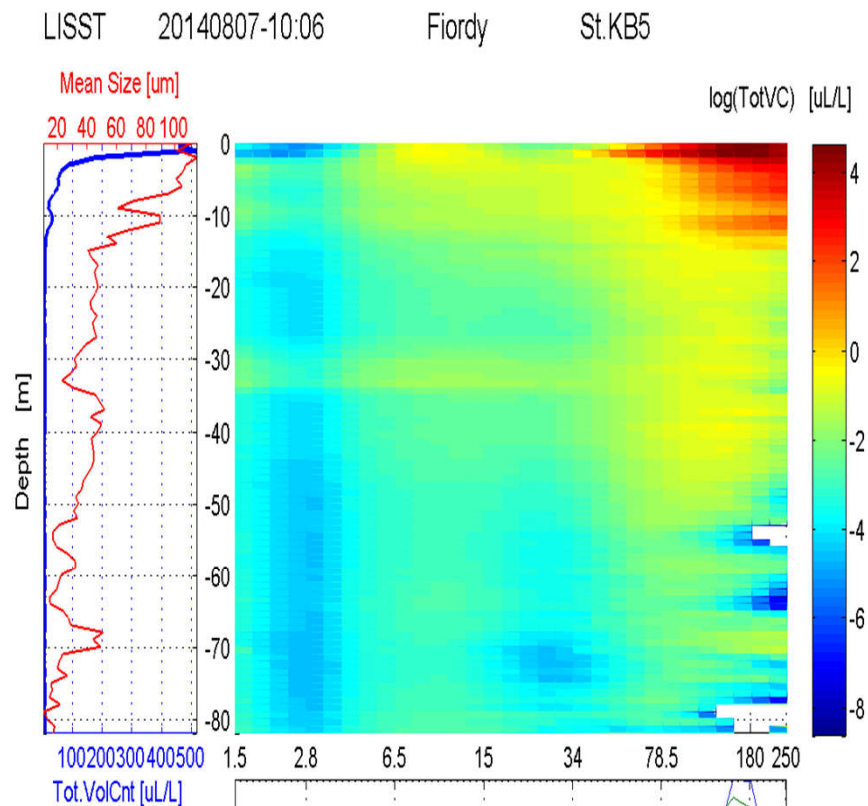
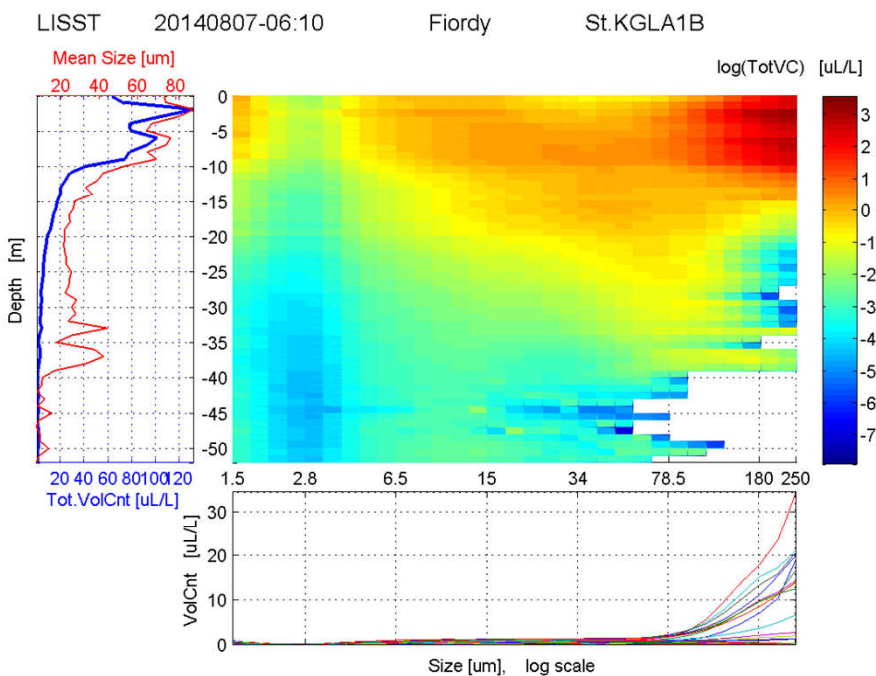
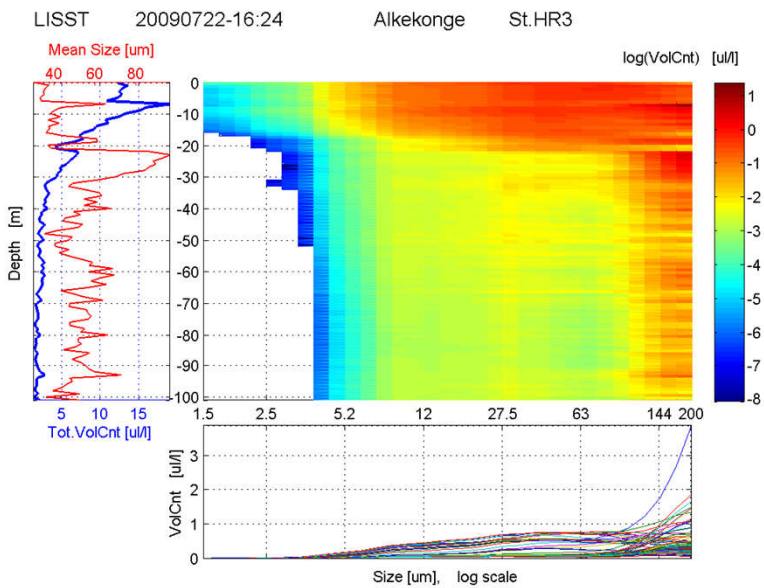


Particle size distribution, measured with LISST, GLAERE stations 2014

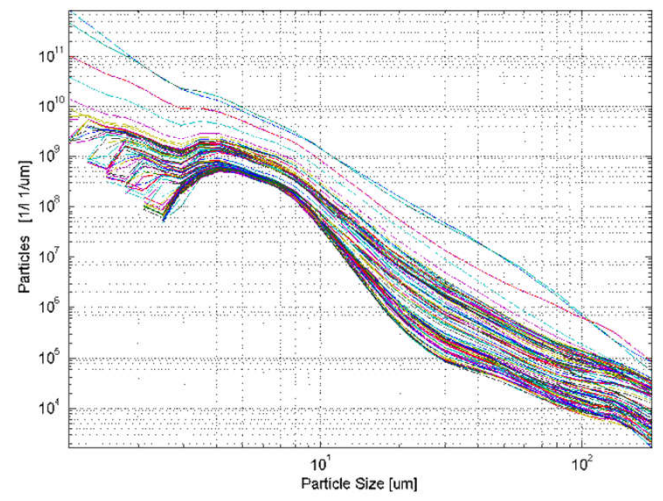
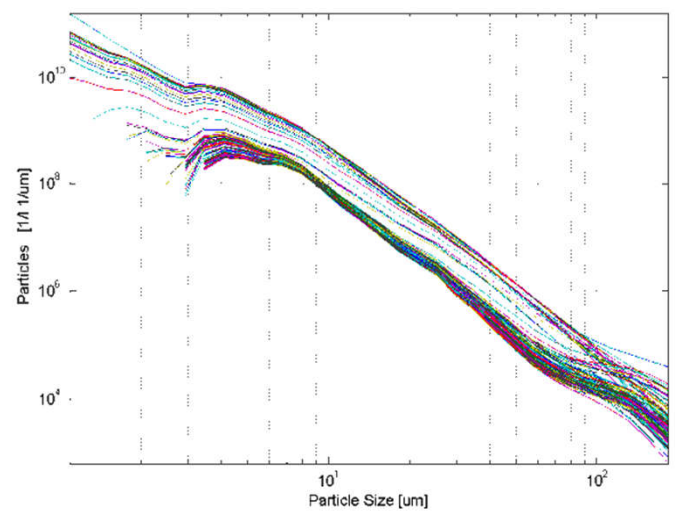
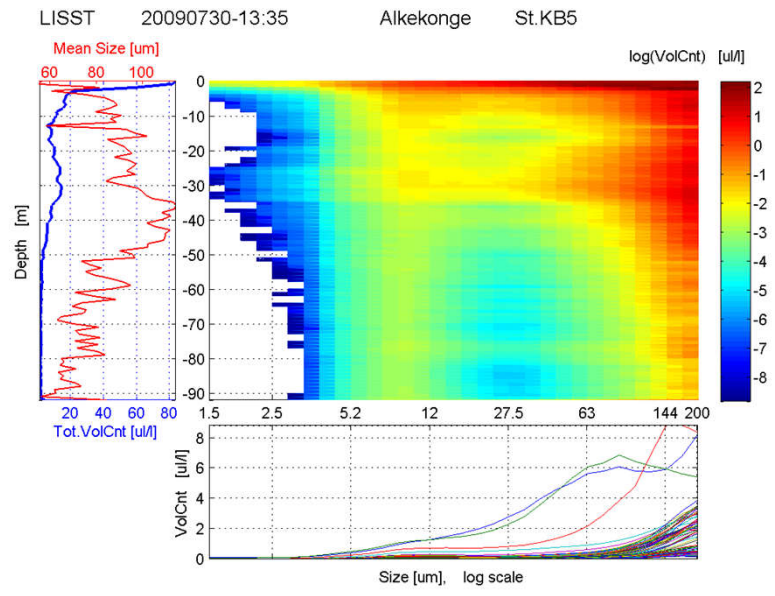


Particle size distribution, measured with LISST, close to the glaciers

Hornsund



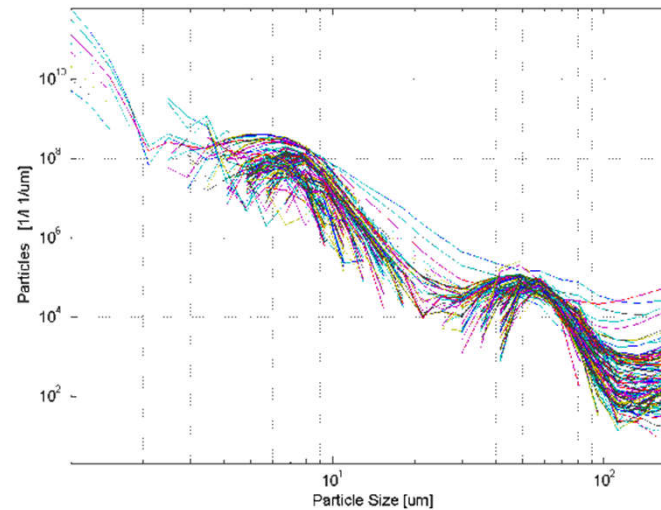
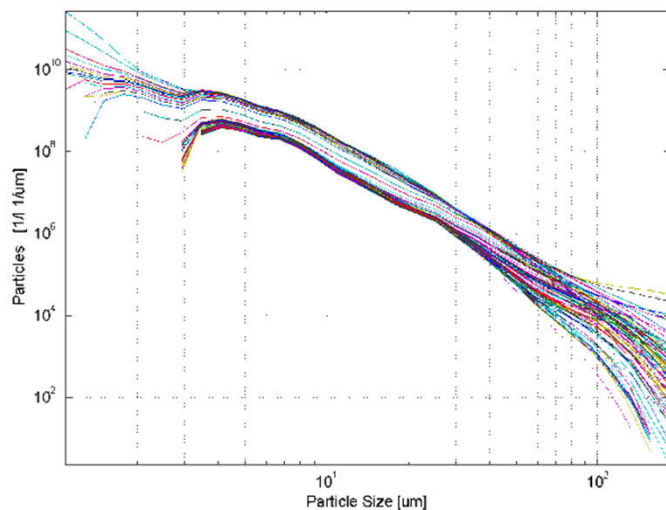
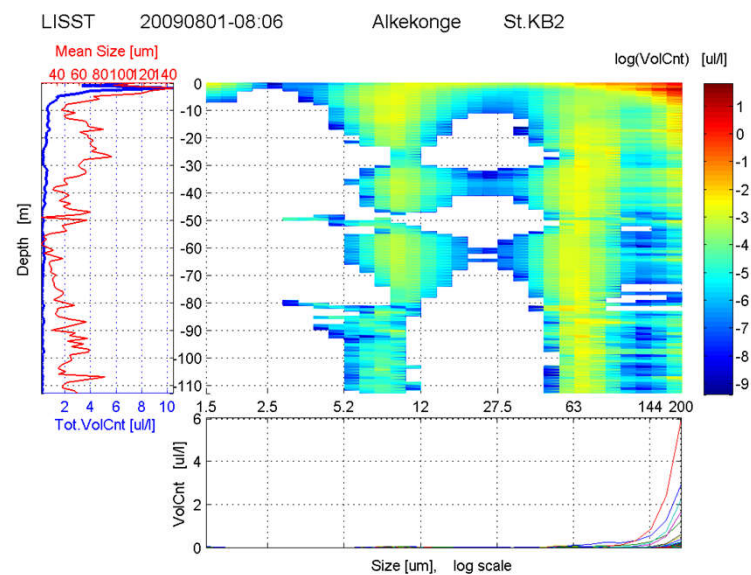
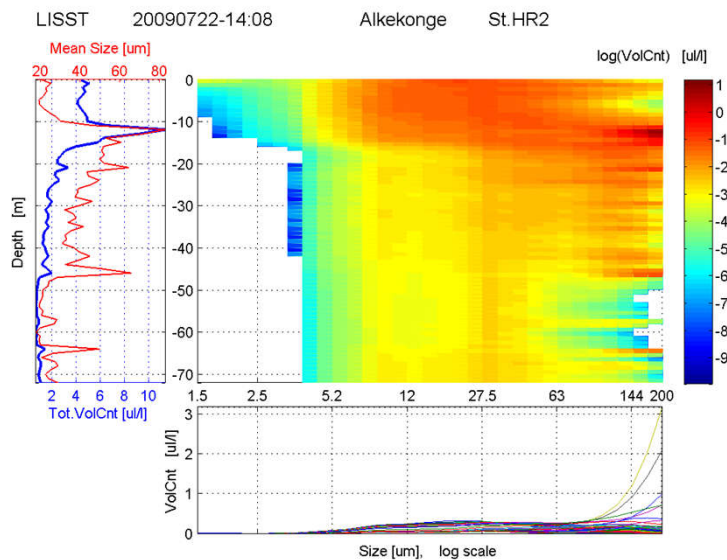
Kongsfiord



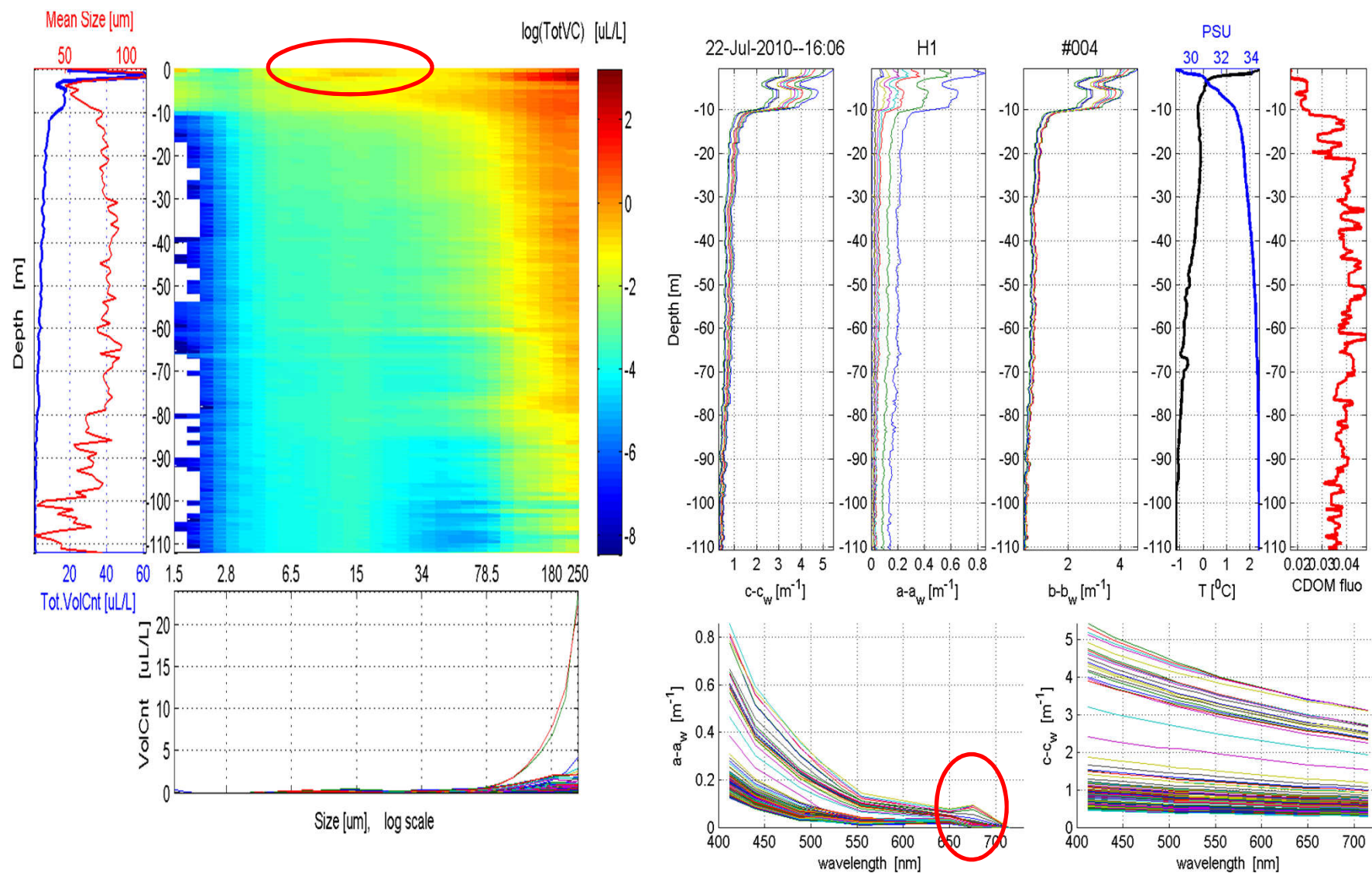
Particle size distribution, measured with LISST, central part of fiords

Hornsund

Kongsfiord

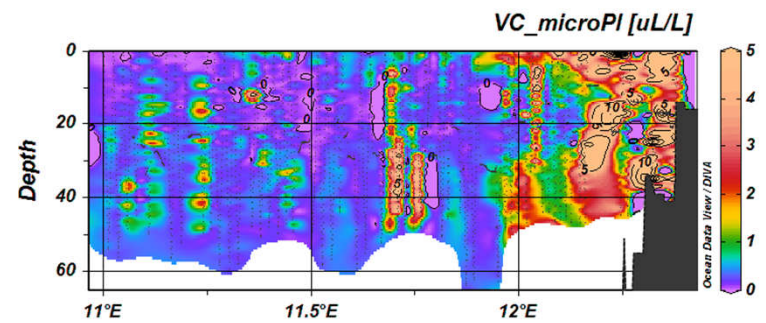
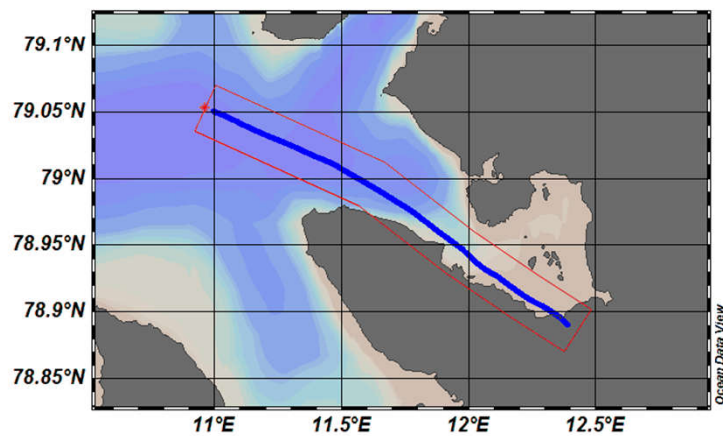
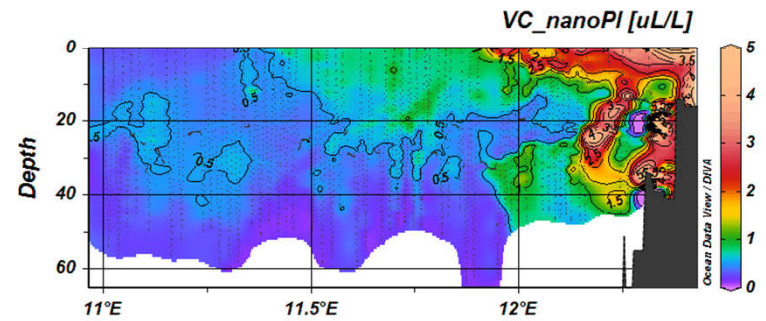
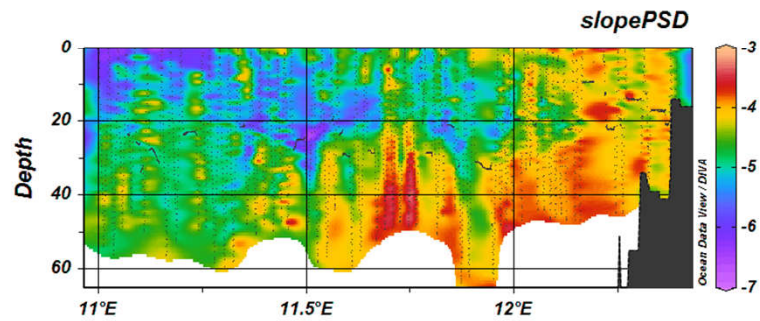
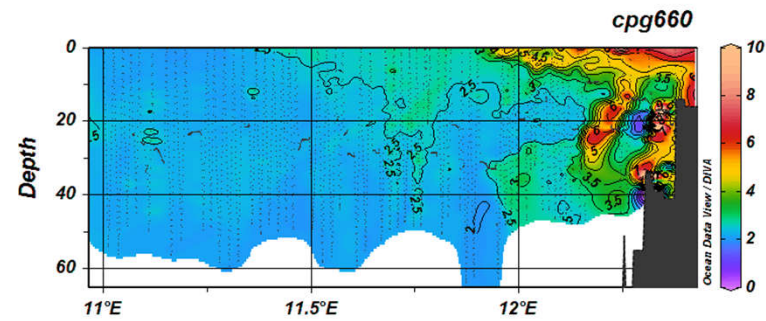
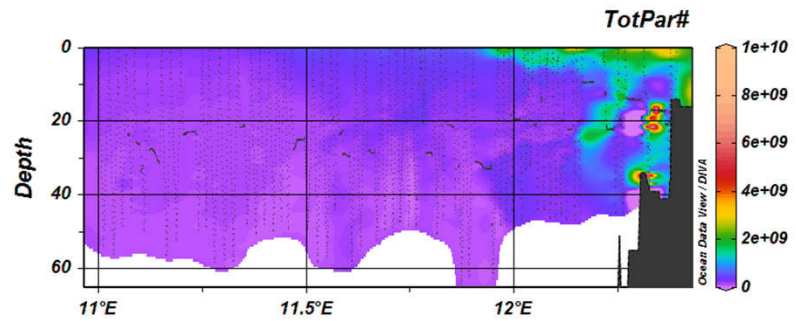


PSD and light absorption and scattering, Hornsund, close to the glacier.



Marked: absorption by chlorophyll and probable relevant portion of organic suspension, sized 5 – 20 um.

PSD with LISST, Volume Particle Concentration integrated for sizes of 5-20 μm (nanoplankton) and 20-200 μm (microplankton); Kongsfiord 2015



2015-08-04, V6-KB5 LISST