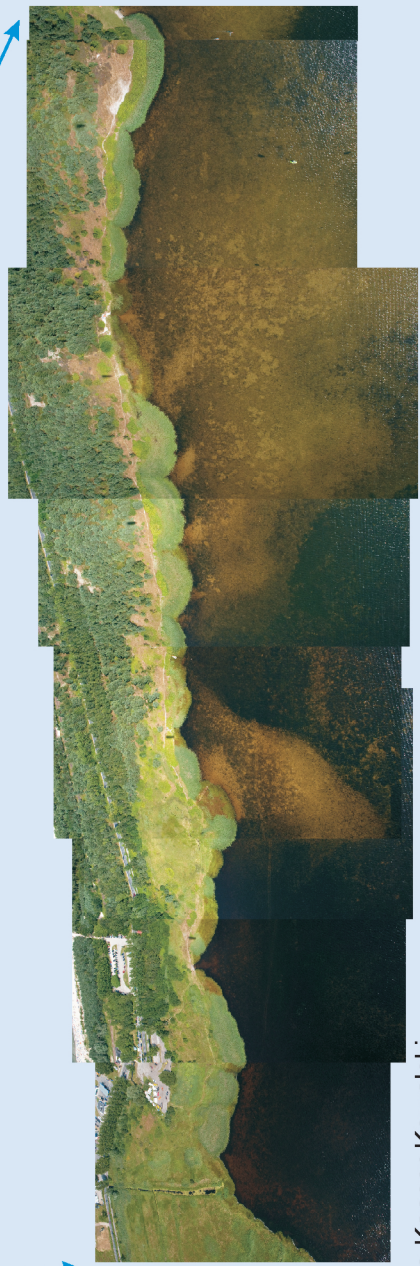
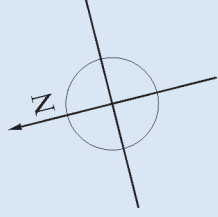
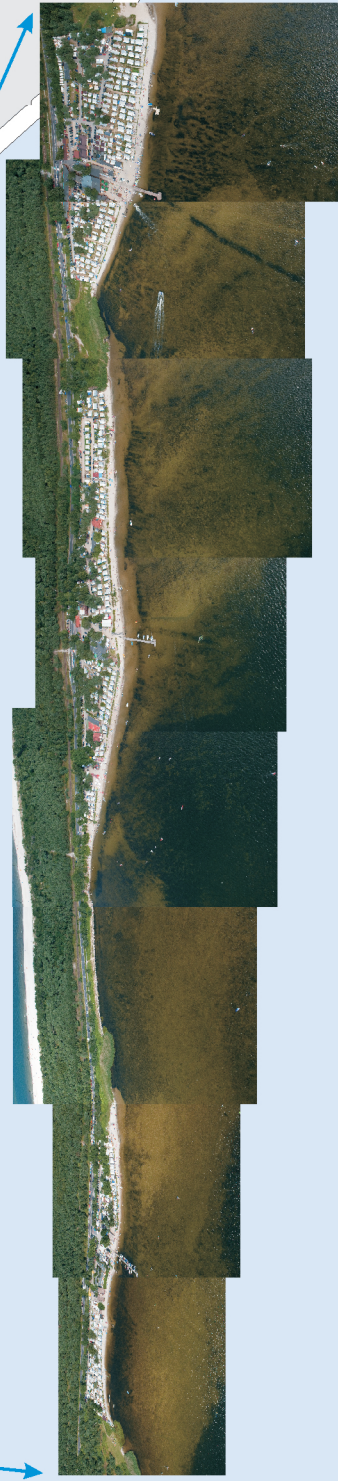


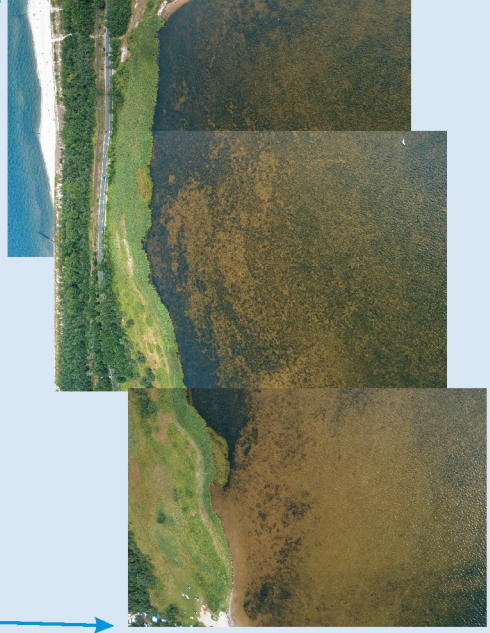
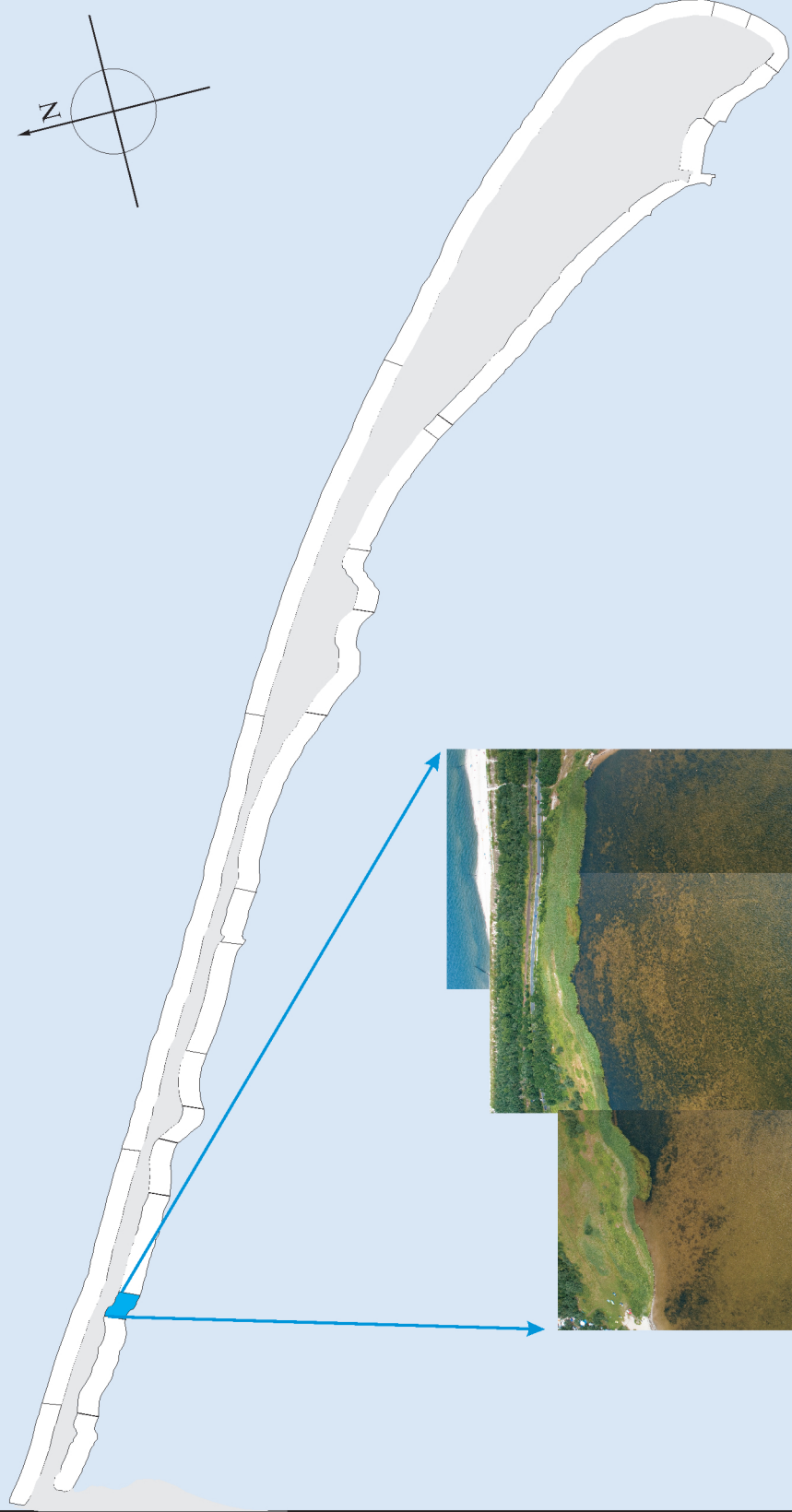
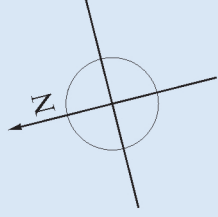
Fragment rezerwatu "Słone Łąki"
i trzcinowiska w rejonie Władysławowa



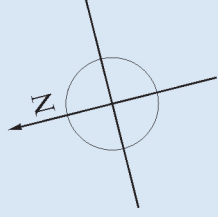


Kempingi (Male morze, Kaper, Chałupy 3)



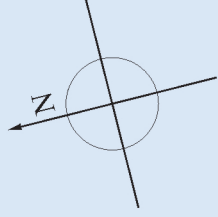


Trzciniowiska pomiędzy kempingami



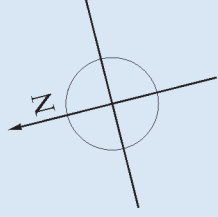
Kempingi (Chaupy 6, Albatros, Ekolaguna, Polaris, Solar)
w rejonie Chałup



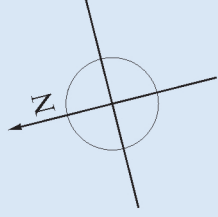


**Przeciwpowodziowe umocnienia brzegu
w Chatupach**





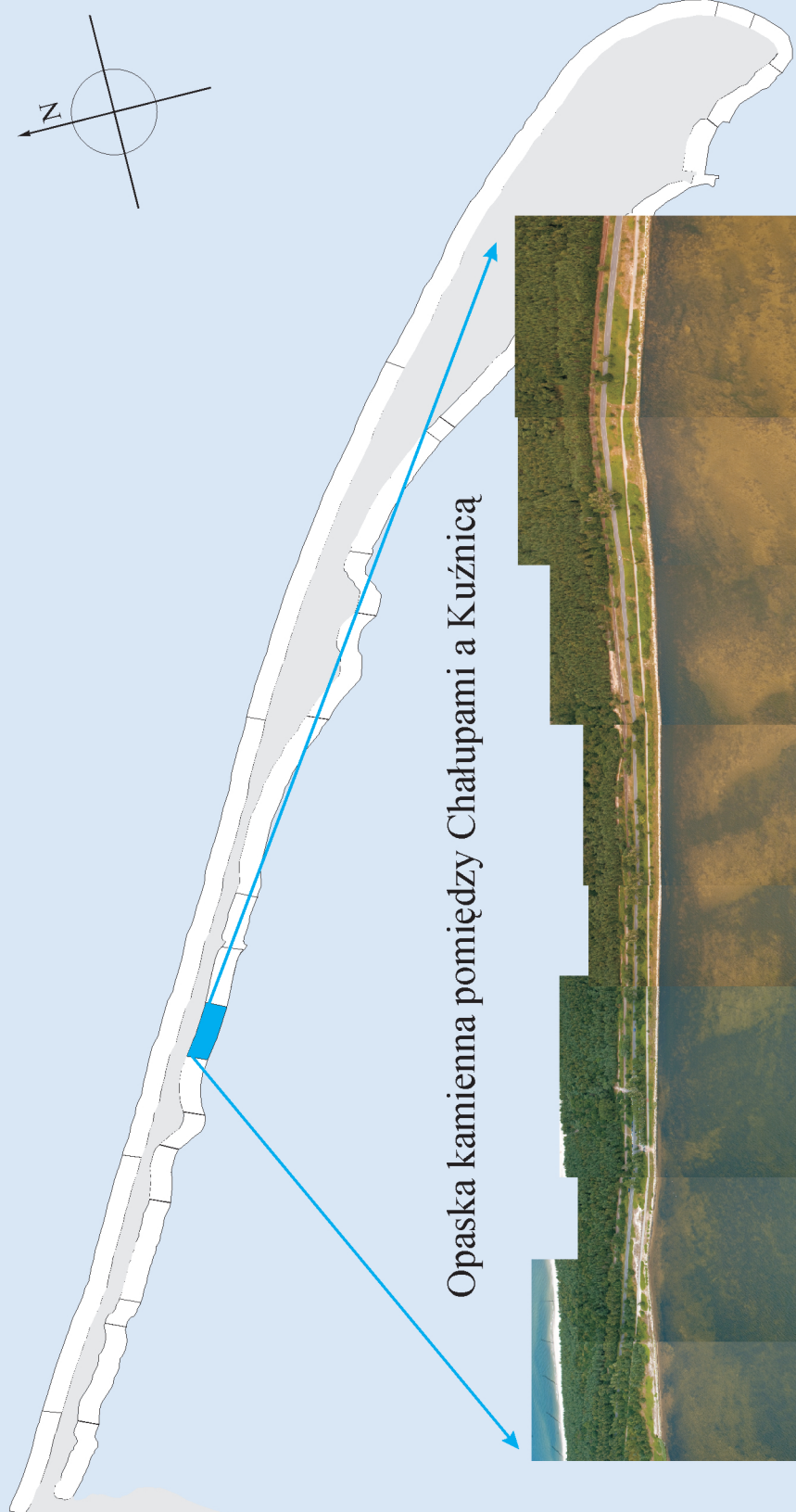
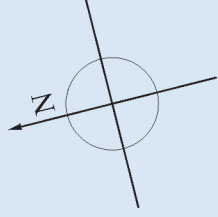
opaska kamienna
i fragment naturalnego brzegu



Naturalny brzeg Zatoki Puckiej

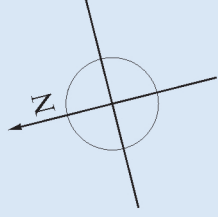


foto Kacper Kowalski

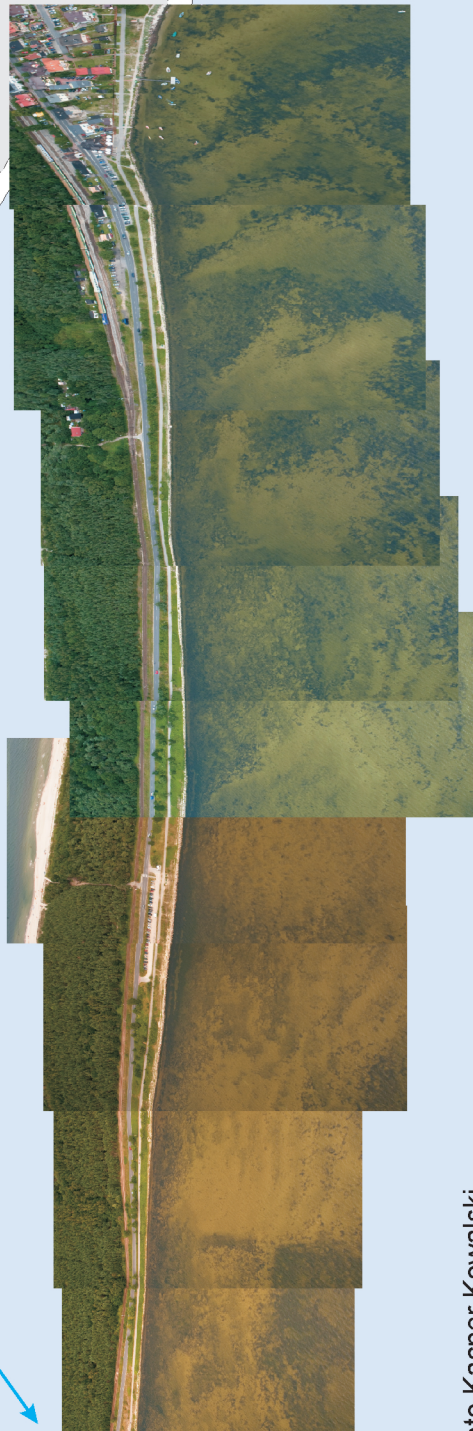


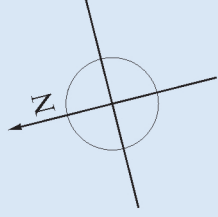
Opaska kamienna pomiędzy Chałupami a Kuźnicą





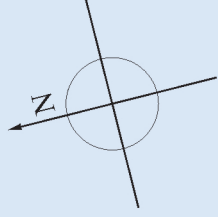
Opaska kamienna przed Kuźnicą



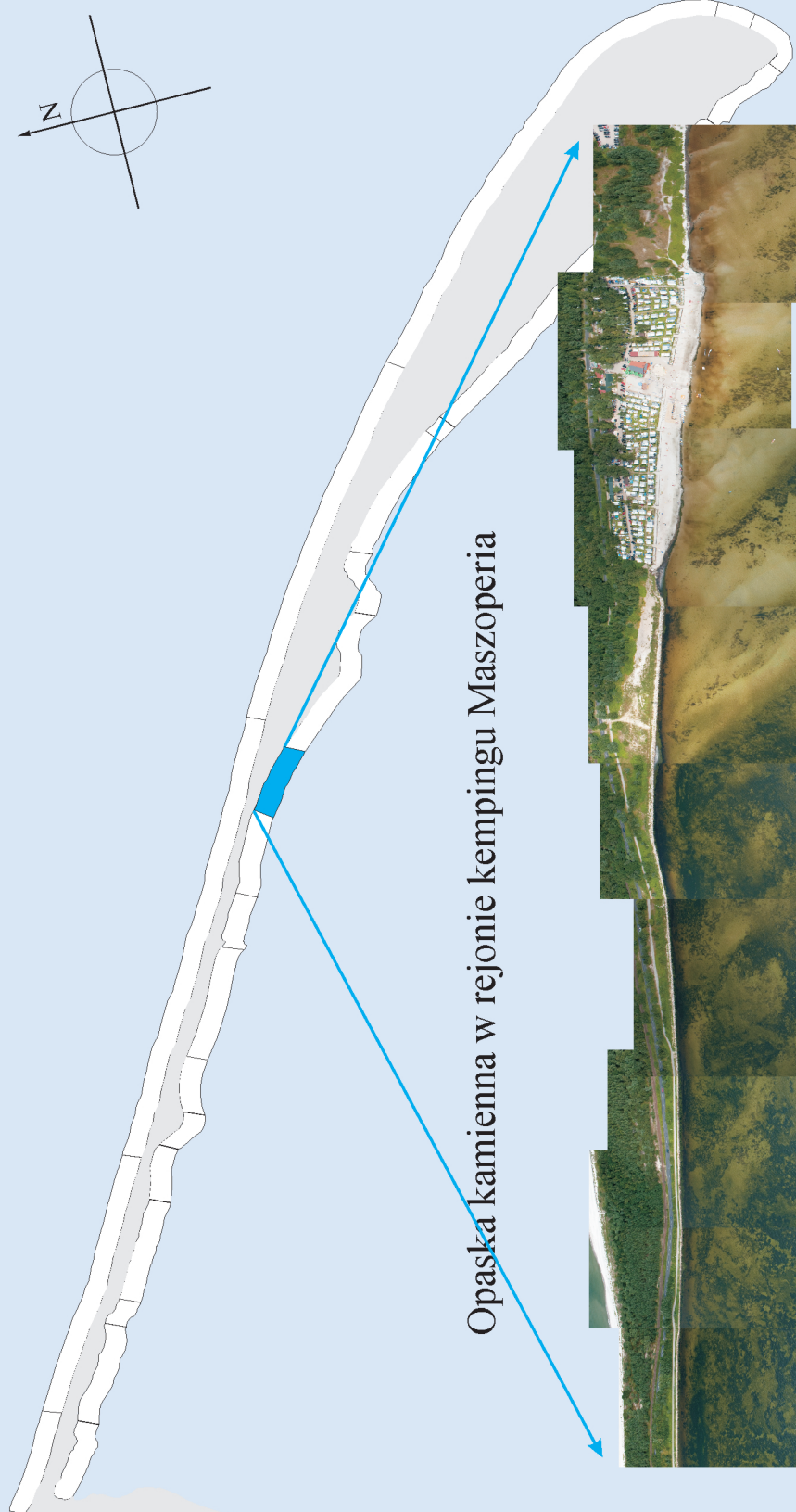
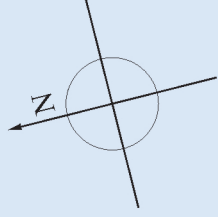


Przystań rybacka w Kuźnicy

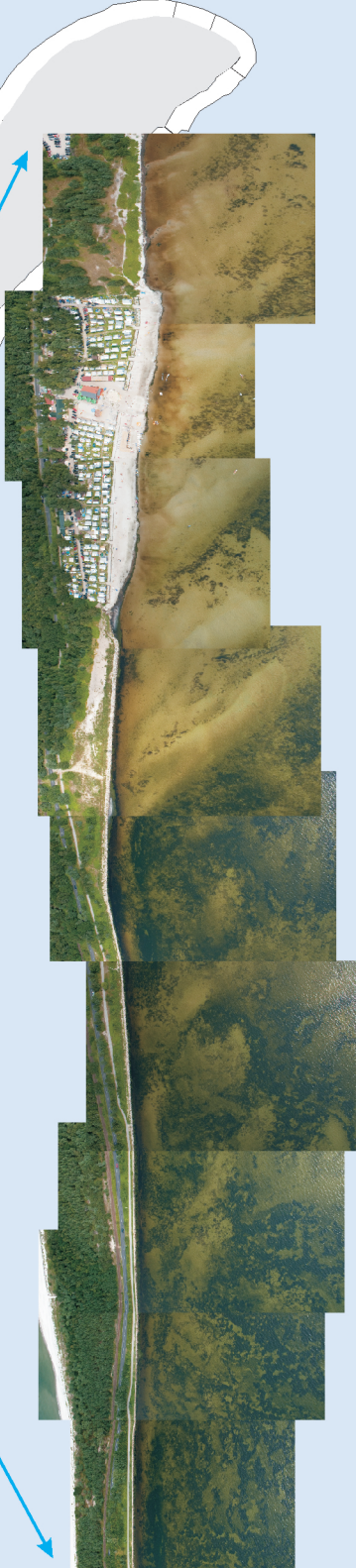


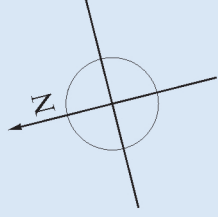


Opaska kamienna w rejonie oś. Kuźnica-Syberia

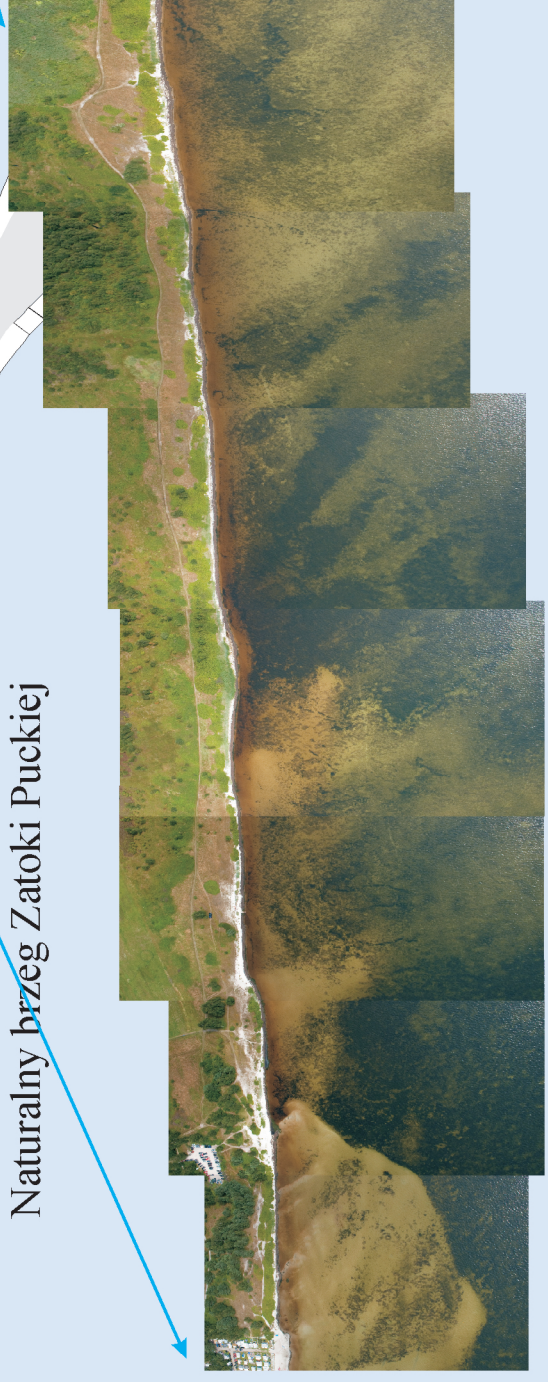


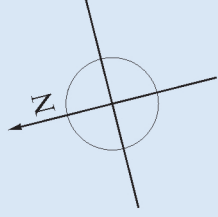
Opaska kamienna w rejonie kempingu Maszoperia



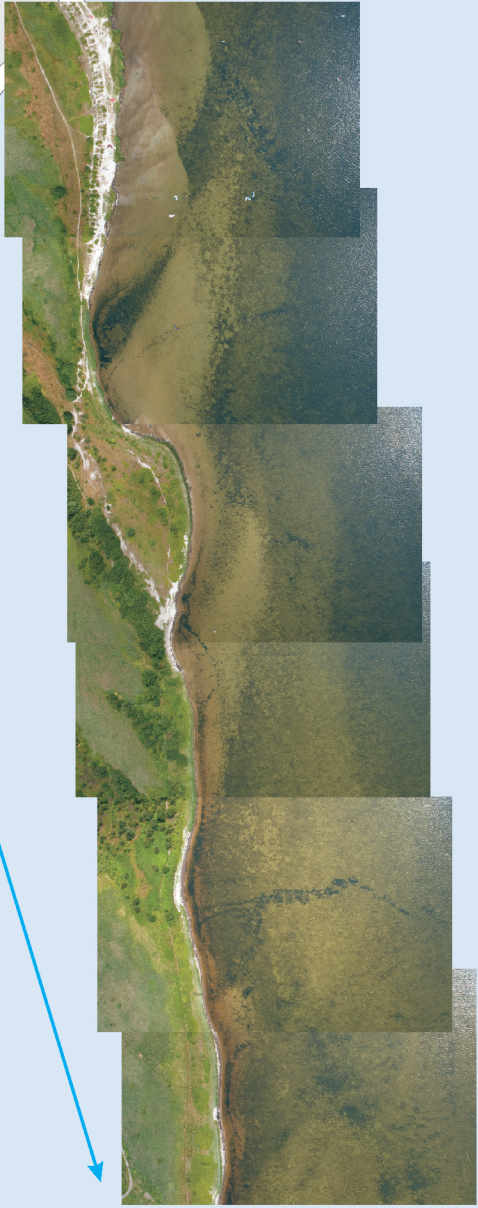


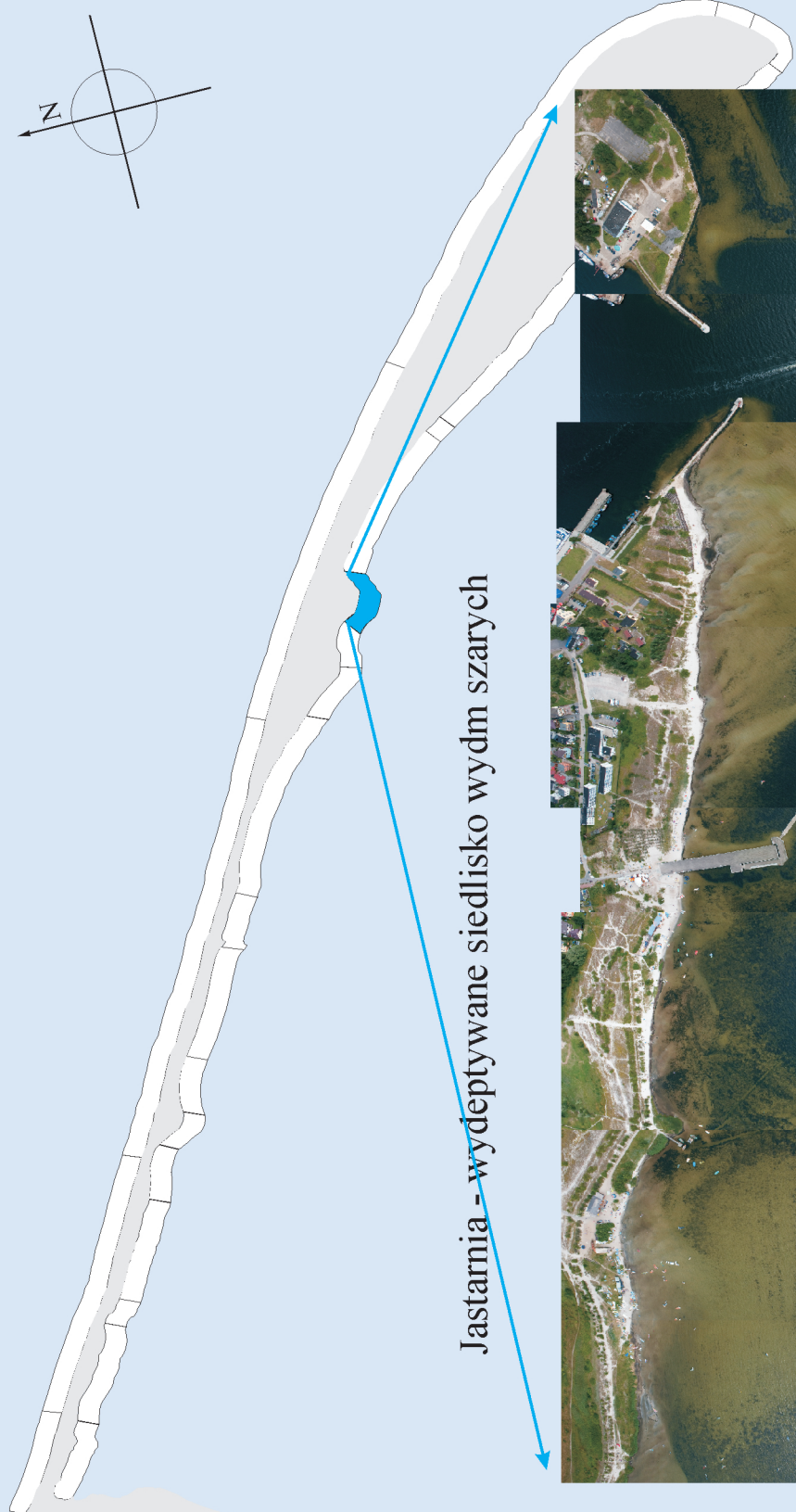
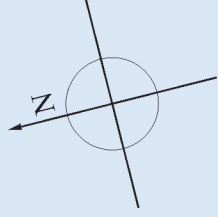
Naturalny brzeg Zatoki Puckiej





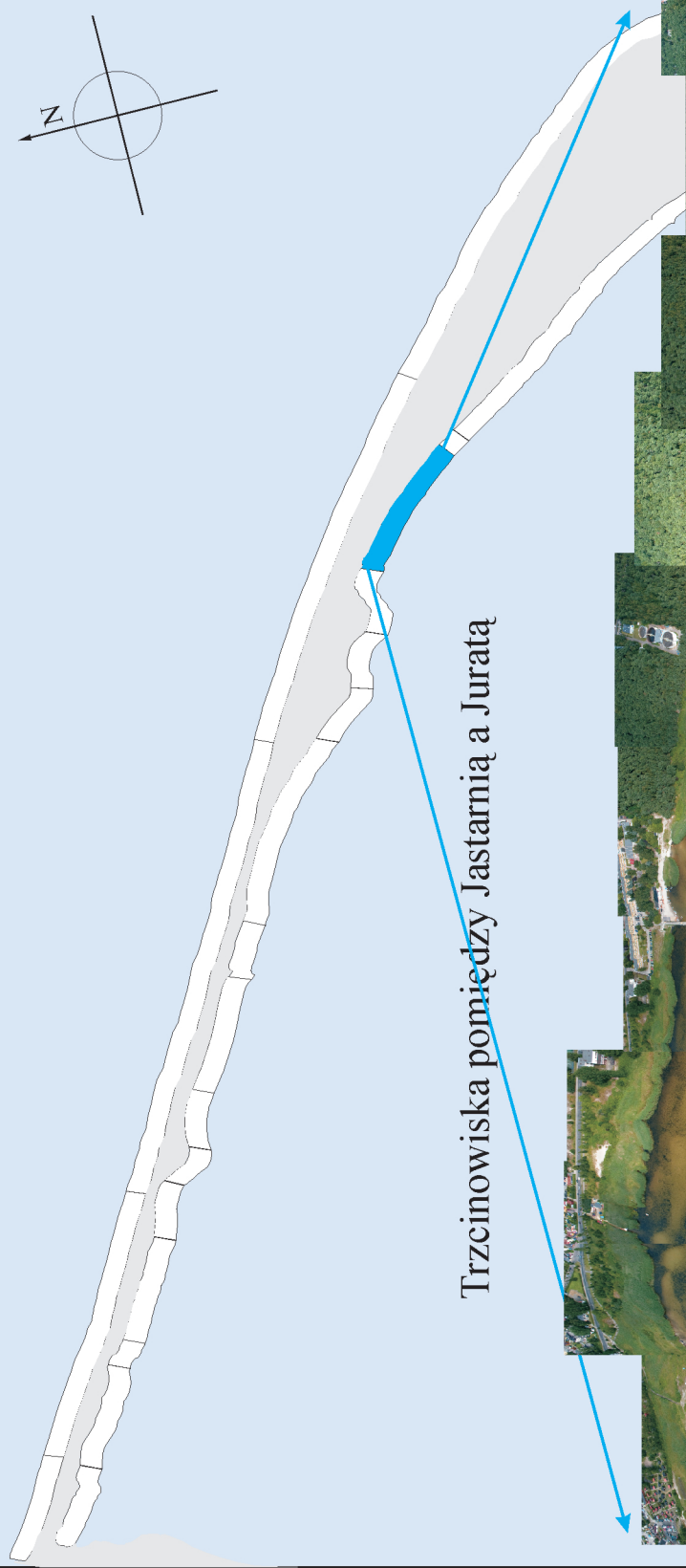
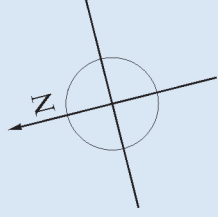
Naturalny brzeg Zatoki Puckiej na zachód od Jastarni



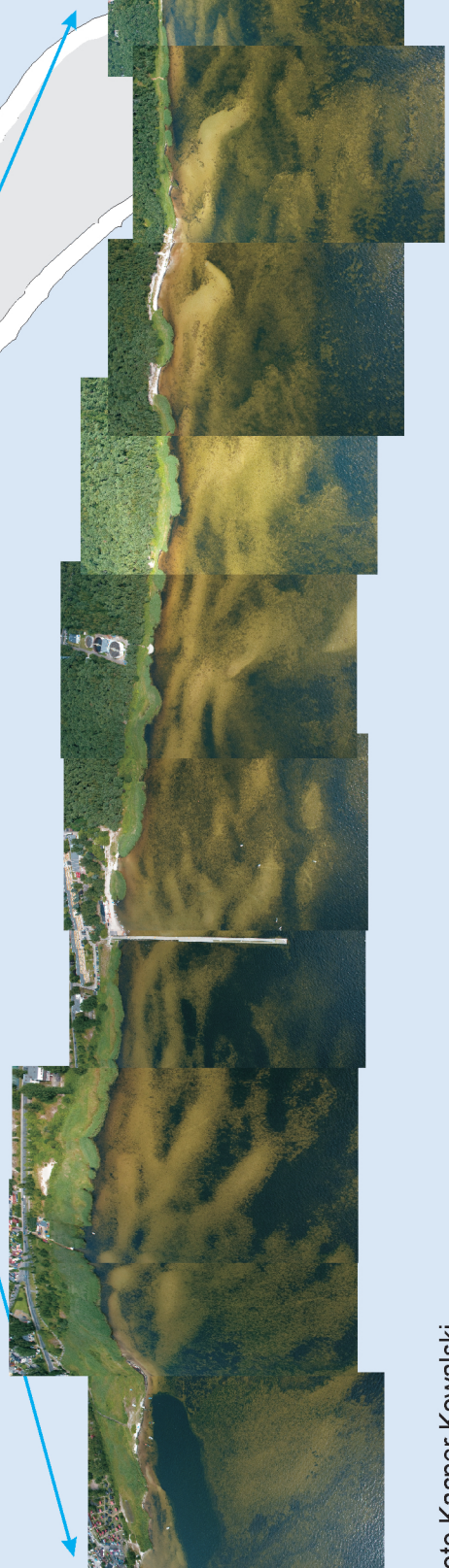


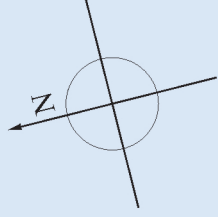
Jastarnia - wydeptywane siedlisko wydm szarych



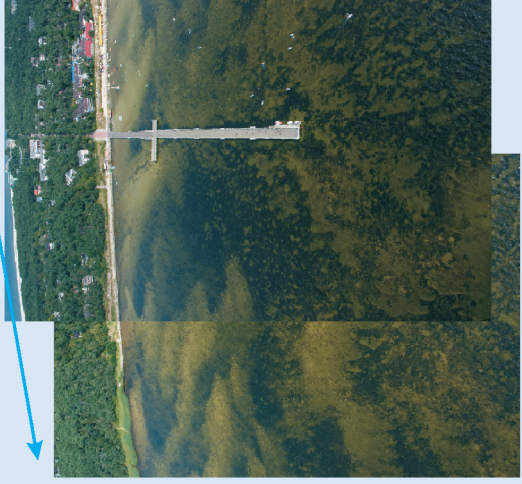


Trzciniowiska pomiędzy Jastarnią a Juratą

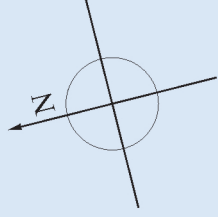


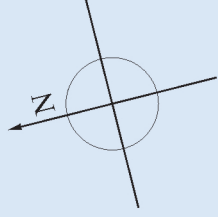


Jurata molo



Las, piaszczysta plaża wydmy szare
w rejonie Cypla Helskiego

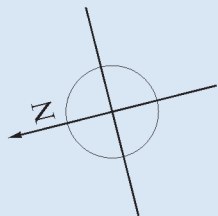
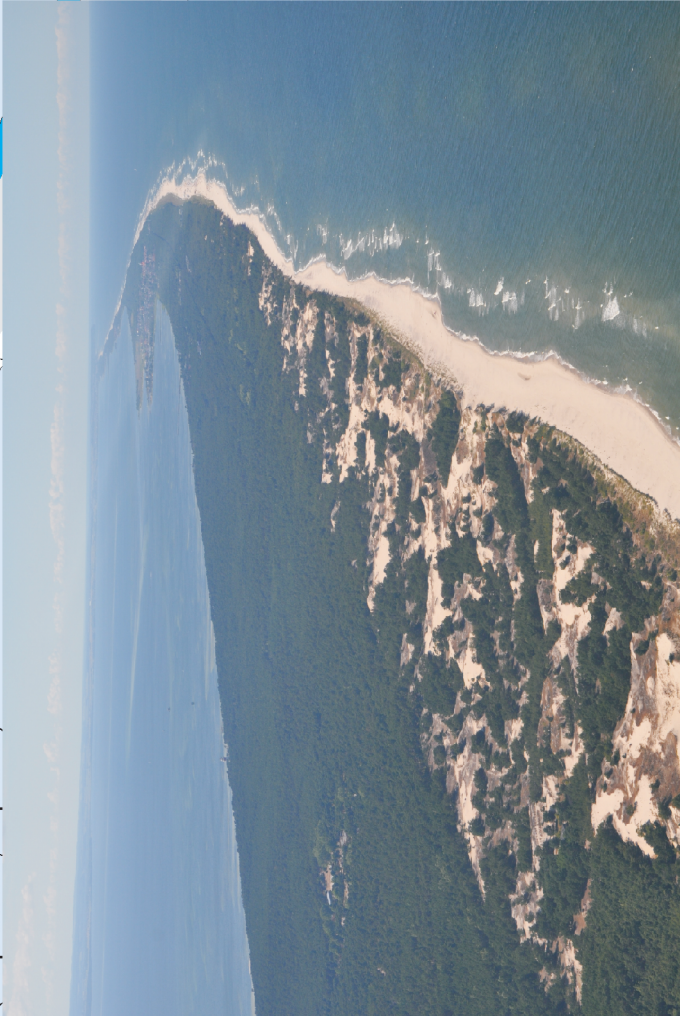




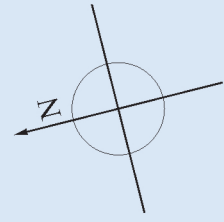
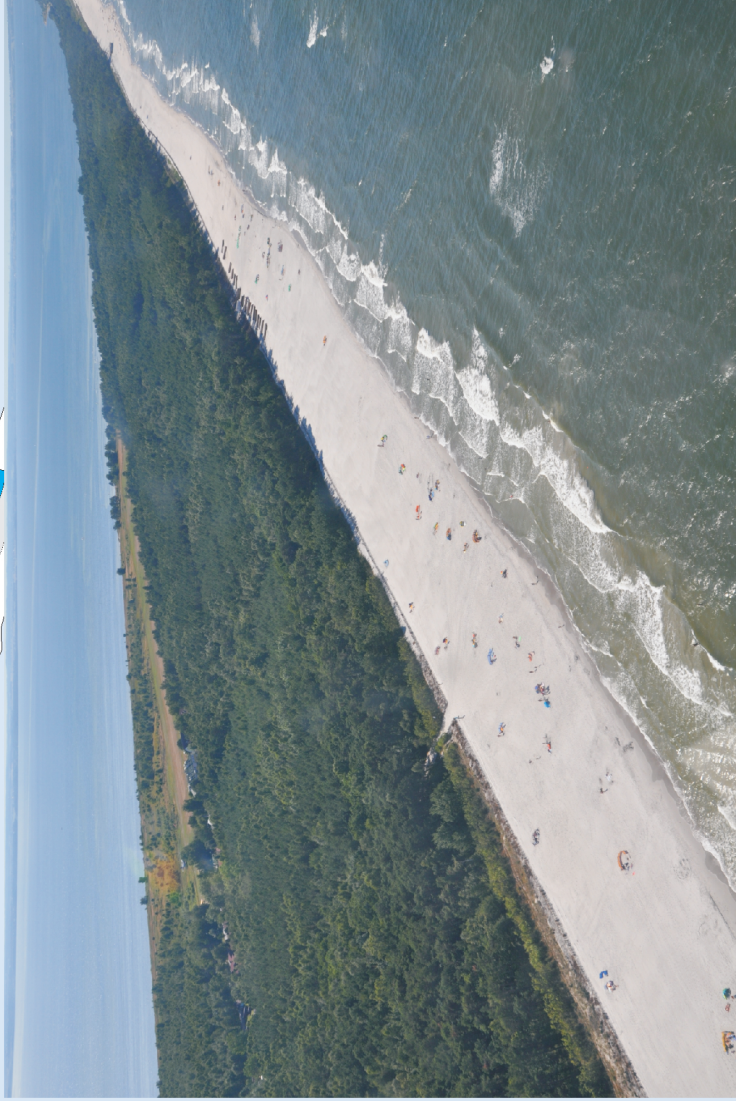
Plaża piaszczysta i wydmy szare

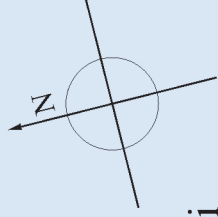


Rezerwat "Wydmy Helskie"
(na pierwszym planie)



Plaża piaszczysta po refulacji





Ostrogi i plaża piaszczysta po refulacji

